

where people
experience God!



TWIN PINES



is located 8 miles southwest of Stroudsburg, PA, in the heart of the beautiful Pocono Mountains. Located just two and one-half hours from New York City and Philadelphia, our 205 acre facility makes it readily accessible

from several major interstate highway systems.

TWIN PINES' VISION is to provide quality facilities and opportunities where people can get away from the noise and confusion of our busy society in order to be still and listen to what God has to say. We will provide the place and the environment where God can speak and God's people can respond to His call and espouse a world view where Christ is the center of every aspect of life. Come...hear Him here...

WE BELIEVE that the Lord Jesus Christ both taught and practiced the need to "get away" for spiritual reflection and inspiration. Twin Pines is dedicated to providing a place where people of all ages can get away to a quiet place and find renewed strength.

hear
HIM
here

TWIN PINES' PURPOSE

is to make Christ known, as the Author of His Word and His World.

Address Service Requested

TWIN PINES
CAMP, CONFERENCE & RETREAT CENTER

3000 Twin Pines Camp Road • Stroudsburg, PA 18360
570.629.2411 • www.twinpines.org • shawnt@twinpines.org



MAY 10-12, 2022



TWIN PINES
CAMP, CONFERENCE & RETREAT CENTER

3000 TWIN PINES CAMP ROAD • STROUDSBURG, PA 18360

570.629.2411 • twinpines.org

Twin Pines is inspected and licensed by the Pennsylvania Department of Health and Agriculture.



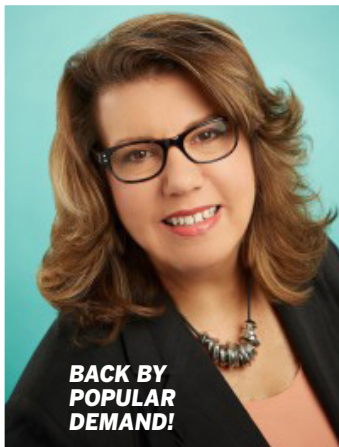
Twin Pines welcomes campers without regard to race, color, or national origin.

MAY 10-12, 2022 • TWIN PINES

Ladies Only RETREAT

Sue's best loved song, "LOL", is a musical and whimsical view of our crazy acronym and texting social media world. She loves to make people laugh with her off-the-wall Jersey logic and sacred sarcasm. Not surprising, Sue has found it's a style of humor that resonates with audiences everywhere. This singer/songwriter and former radio personality tours with her own comedy and musical concerts since 1974.

She speaks for Raymond James Prayer Breakfasts, Prison Fellowship Ministry Briefings, CEF (Child Evangelism



**BACK BY
POPULAR
DEMAND!**

**SUE DUFFIELD,
SPEAKER**

Fellowship), Rotary International, MRO (Motor Racing Outreach for NASCAR), CWIMA (Christian Women In Media Assoc.), UMW Regional/National events, Trucker Church Radio, women's retreats and international conferences. Sue is also an advocate and key fundraiser for outreach involving abused women and human trafficking both here in the USA as well as Southeast Asia.

Sue's humorous stories and inspirational writings have been featured in New Jersey's "SJ" Magazine, Absolutely Gospel Music Network, SGN Network, "Laugh Lines" (the National AG Women's Ministry website) and John C. Maxwell's book "Everyone Communicates Few Connect" (Thomas Nelson). Sue's first book on humor and the journey titled, "SueBiquitous: A Humorous Travelog of an Unfiltered Saint!", was published in 2016.

Sue's velvet-like voice has been compared to Marilyn McCoo, Karen Carpenter and even Rosemary Clooney. Her effervescence of lyric, clarity and interpretation of song has and will always be her greatest strength. Jersey girl Sue married her high school sweetheart, Jeff Duffield, who is a keyboardist, arranger and studio musician, both residing in Nashville, TN. They both traveled with the Sammy Hall Singers of Sevierville, TN in the early 70s.

» See more at: www.sueduffield.com



This retreat begins on **Tuesday, May 10th** with supper at 5:00 PM and concludes on **Thursday, May 12th** with the noon meal.



REGISTER ONLINE AT
2022ladiesonly.eventbrite.com
570.629.2411 • twinpines.org

TWIN PINES LADIES ONLY RETREAT

REGISTRATION FORM

All participants should register in advance. Send completed form and \$25.00 per person non-refundable deposit to:

TWIN PINES 3000 Twin Pines Camp Rd.,
Stroudsburg, PA 18360

REGISTRATION DEADLINE: MAY 6, 2022

NAME _____

ADDRESS _____

PHONE _____

EMAIL _____

CHURCH _____

HOUSING OPTIONS:

ASPEN LODGE Double Occupancy
\$168.00 per person x _____ = _____
(includes bedding/bathroom linens, all meals, and program materials)

ASPEN LODGE Single Occupancy
\$193.00 per person x _____ = _____
(includes bedding/bathroom linens, all meals, and program materials)

HEMLOCK LODGE Double Occupancy
\$148.00 per person x _____ = _____
(includes bedding/bathroom linens, all meals, and program materials)

HEMLOCK LODGE Single Occupancy
\$173.00 per person x _____ = _____
(includes bedding/bathroom linens, all meals, and program materials)

Check here for handicapped room: ☐

ROOMMATE PREFERENCE _____

PAYMENT:

- ☐ \$25 Deposit Enclosed
☐ Full Payment Enclosed
All checks should be payable to TWIN PINES.

Total Amount
Enclosed:
\$ _____